

**PHOTON SCIENCES DIRECTORATE  
ADVANCED PHOTON SOURCE**  
S. STREIFFER  
ASSOCIATE LABORATORY DIRECTOR  
DIRECTOR, ADVANCED PHOTON SOURCE

Special Advisor for Imaging and Instrumentation  
C. Jacobsen

Life Science Advisor  
R. Fischetti

Analytical Microscopy & Microanalysis  
N. Zaluzec

J. CONNOLLY  
Deputy Assoc. Lab. Dir. Operations

D. M. MILLS  
Deputy Assoc. Lab. Dir. Science

G. SRAJER  
Deputy Assoc. Lab. Dir. Planning & Integration

Planning and Integration  
G. Srajer

PSC Communications and Information  
R. Fenner

PSC Interim HR  
K. Webb

User Administration and Support  
S. White-DePace

PSC Finance & Budget  
C. McGhee

**Accelerator Systems Division (ASD)**  
J. Byrd  
Division Director

M. Borland  
Assoc. Div. Dir.

V. Sajaev  
Assoc. Div. Dir.

**APS Engineering Support Division (AES)**  
J. Connolly  
Division Director

G. Pile  
Deputy Division Director

IS APS Site Operations  
R. Tollner

APS-U Integration  
H. Cease

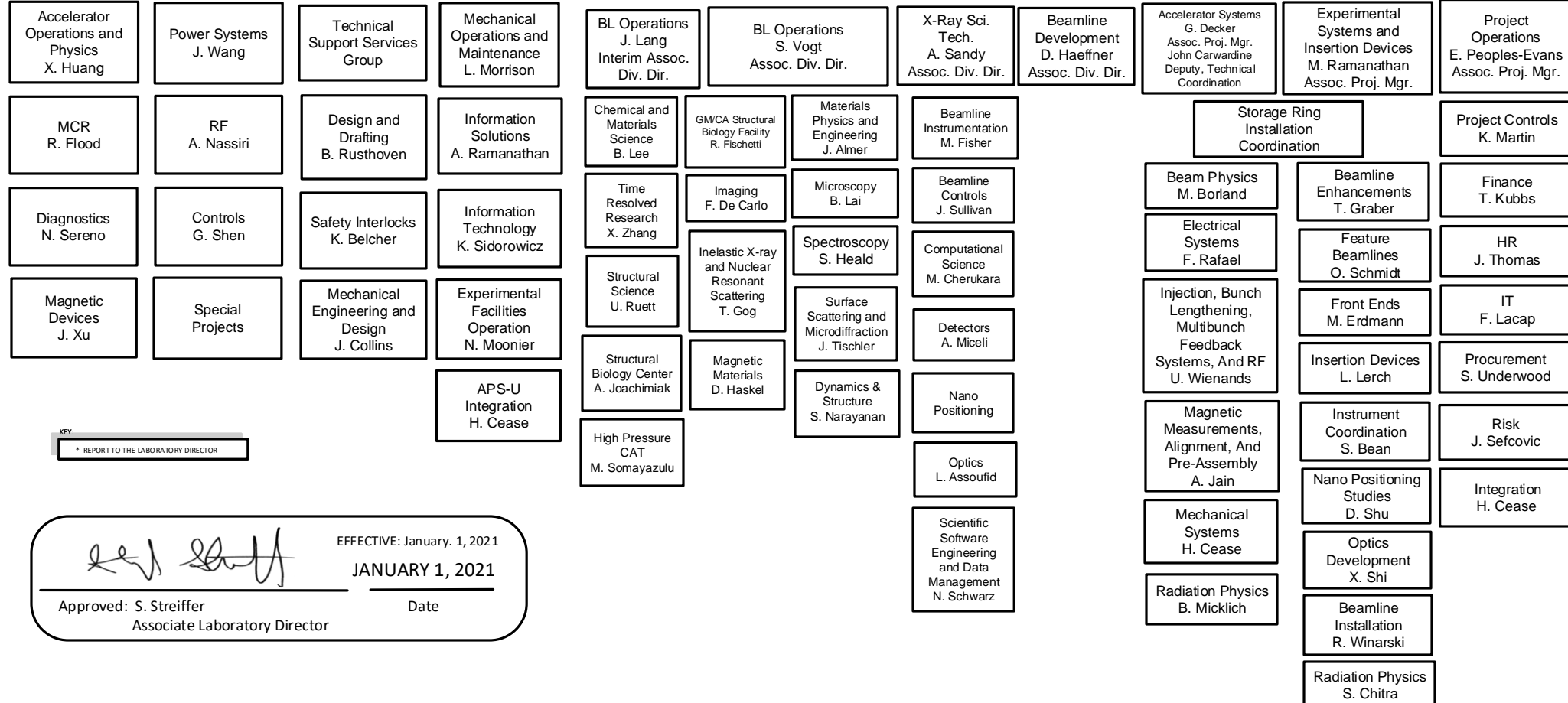
**X-Ray Science Division (XSD)**  
J. Lang  
Division Director

Senior Advisory Group

**APS Upgrade Project (APS-U)**  
R. Hettel\*  
Project Director

J. Kerby  
Chief Project Officer

E. Peoples-Evans  
Deputy Project Manager



KEY:  
\* REPORT TO THE LABORATORY DIRECTOR

EFFECTIVE: January 1, 2021  
**JANUARY 1, 2021**

Approved:  S. Streiffer  
Associate Laboratory Director

Date