

Safety During the Shutdown

Tiffany Freedman
ESH Head, APS Upgrade Project



U.S. DEPARTMENT OF
ENERGY

Argonne National Laboratory is a
U.S. Department of Energy laboratory
managed by UChicago Argonne, LLC.

Argonne  | APS
NATIONAL LABORATORY

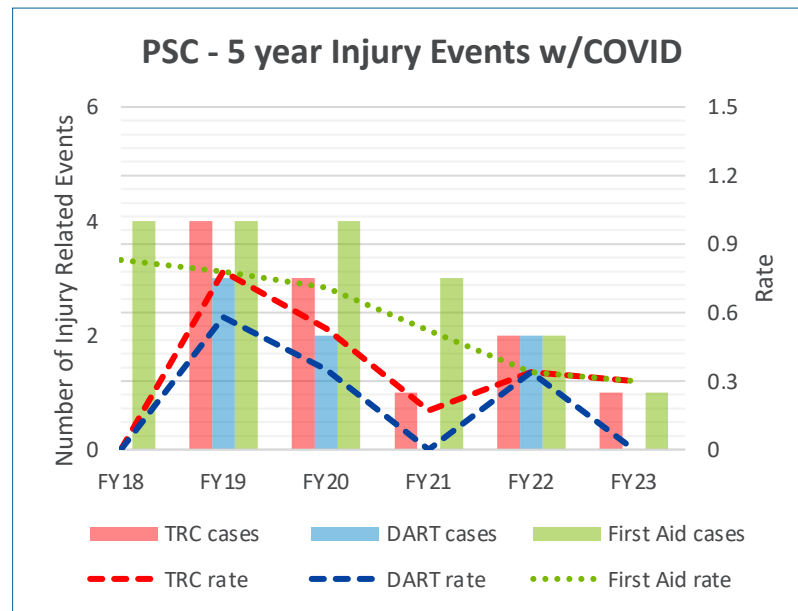
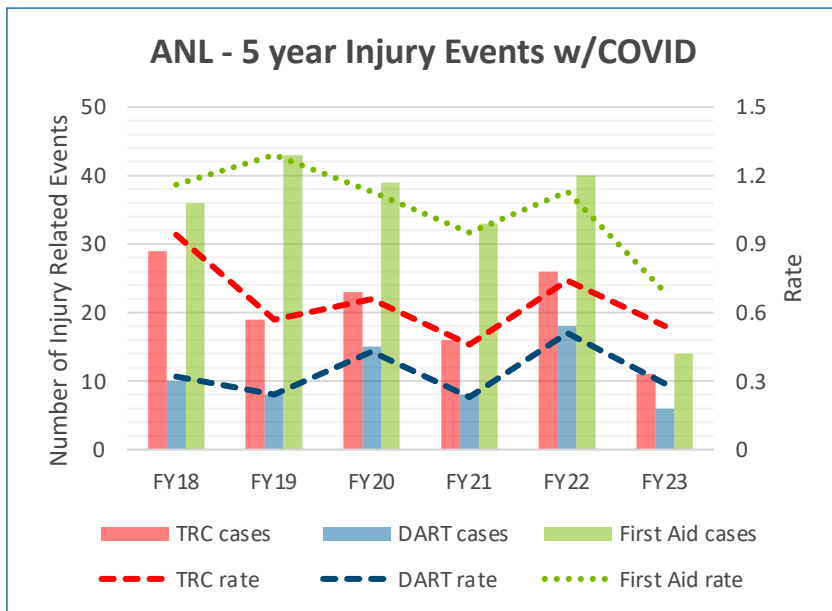
SAFETY

Photon Sciences safety record for FY23 – No additional events since last report

1 First Aid Injury

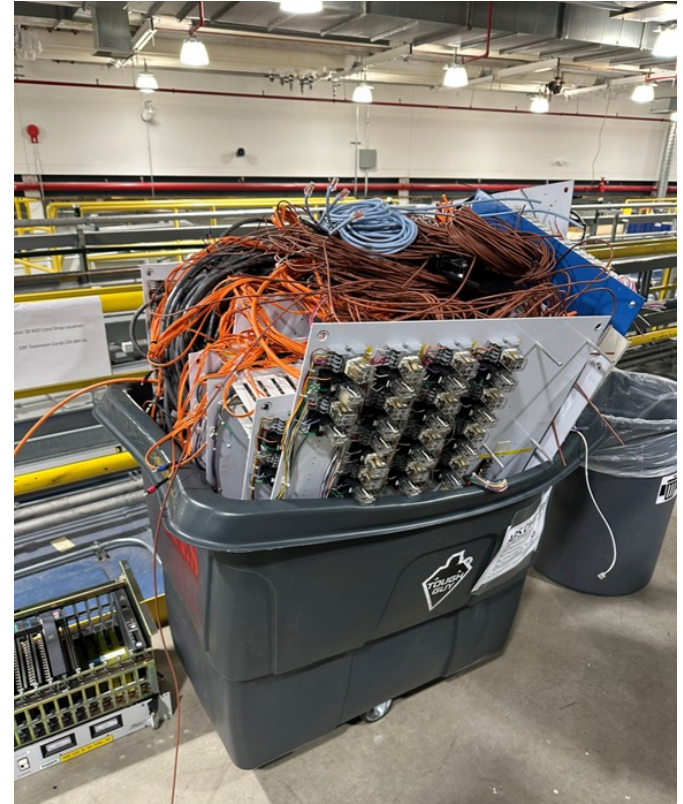
1 OSHA Recordable Cases (TRC)

0 Days Away or Restricted Time (DART)



SAFETY

- Issues
 - Housekeeping – improving over last week, but reminders to remain vigilant
 - PPE – seems to be remaining about the same
 - General trash in green recycling bins
- Tracking
 - 76 Smart Cards since start of the dark time
 - 17 unsafe – most PPE related and housekeeping
 - 31 ASO/ESH observations
 - 12 improvement observations





Construction Areas

During the shutdown, construction areas on the experiment floor will be marked with signs and construction tape.

- Do not enter these areas without prior approval and without the proper personal protective equipment.
- Construction areas will change frequently. Please be aware of your surroundings and read the information provided on where work is happening.

Personal Protective Equipment

Everyone in construction areas must wear and use proper PPE for every job performed.

- PPE must be properly fitted and readily available for Argonne personnel, contractors and subcontractors.
- The minimal requirement for access to construction areas includes:
 - Long pants.
 - Quarter-length sleeves.
 - Safety glasses.
 - Hard hats.
 - Over-the-ankle safety boots.



SAFETY SURVEY

- Nothing is more important than your safety
- You are closest to the work, so we want to hear from you
- Be on the lookout for a survey we will field soon
- Survey is anonymous
- Results to be shared at the June PSC All-Hands meeting

