

**APS ENGINEERING SUPPORT DIVISION**  
**W. RUZICKA**  
**DIVISION DIRECTOR**

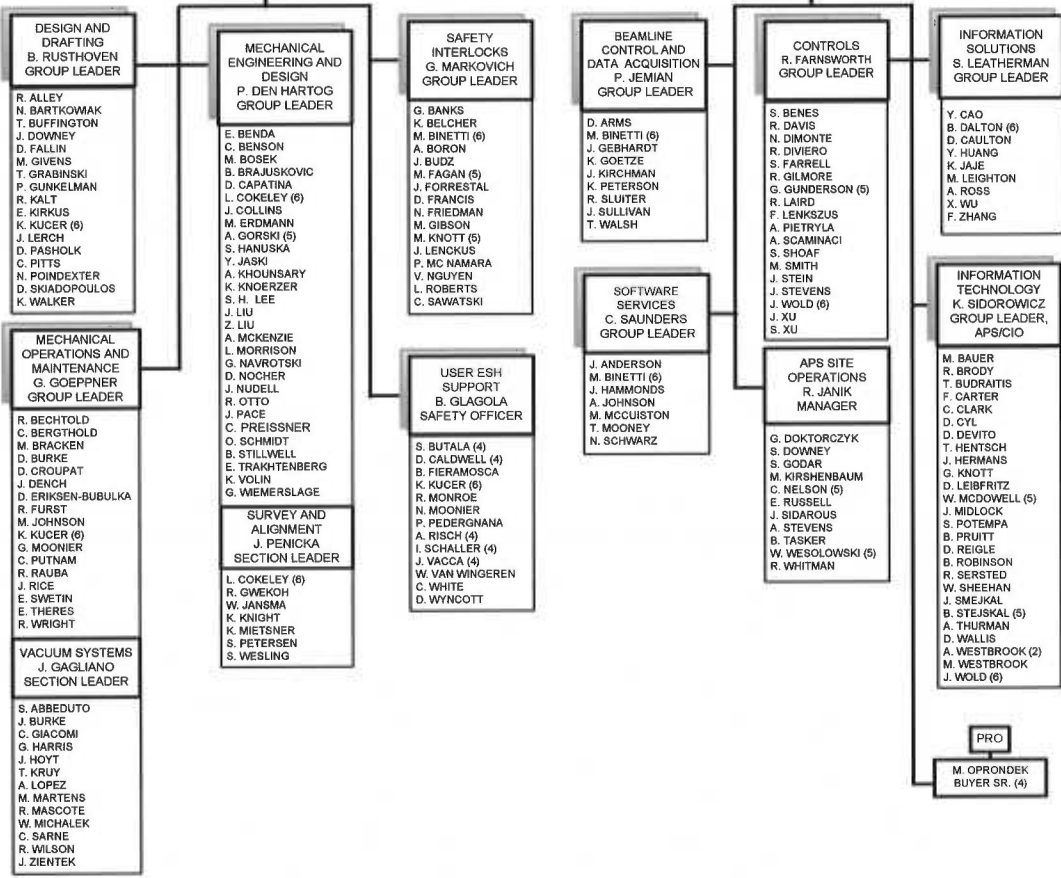
ASSISTANT DIVISION DIRECTOR	J. HLAVACIK	ESH COORDINATOR	E. CHANG
EXECUTIVE ASSISTANT	P. CAMELI	PRINCIPAL PROJECT ENGR.	C. PROKUSKI
USER TECHNICAL INTERFACE	J. CROSS	EXEC. SECRETARY	L. DEVITO
QA ENGINEERING SPECIALIST	D. FERGUSON	ADMIN. ASSISTANT	K. DAVIS
TECH. OPS. SPECIALIST	S. DAVEY	SR. SECRETARY	J. PRANSKY
PRINCIPAL TECH. BEAMLINE SPCLST	P. FERNANDEZ		

**MECHANICAL AND INTERLOCK SYSTEMS**  
**G. PILE**  
**ASSOCIATE DIVISION DIRECTOR**

STAFF ASST. SR.	C. YUELYS-MIKSIS
SR. BEAMLINE ENGINEER	M. RAMANATHAN (6)
SR. ENGINEER	D. SHU
ADMIN. SECRETARY	B. DALTON (6)
STUDENT	J. ANTON (2)
STUDENT	S. KEARNEY (2)

**COMPUTER SYSTEMS**  
**J. MACLEAN**  
**ASSOCIATE DIVISION DIRECTOR**

COMPUTER SYSTEM ENGINEER	N. ARNOLD
PROJECT SPECIALIST	R. TORRES
TECH. DOCUMENT MANAGER	C. EYBERGER
TECHNICAL EDITOR	S. PICOLOGLOU (5)
ADMIN. SECRETARY	S. GODAR (6)



KEY:

(1) INTERIM
(2) STUDENT
(3) ARGONNE FELLOW
(4) OTHER DIVISION
(5) S.T.A.
(6) MULTIPLE ASSIGNMENT
(7) CONTRACT PERSONNEL
(8) VISITING FACULTY/SCIENTIST
(9) LEAVE OF ABSENCE
(10) ASSIGNED TO CNM
(11) EMERITUS

EFFECTIVE: January 1, 2012

*William C. Ruzicka* 12/19/11

APPROVED: W. Ruzicka      DATE

Director